

PEREGRINE HOSPITALITY

Peregrine Room and Travel Discount Program

Internal use only



PEREGRINE HOSPITALITY

All Associates,
Immediate Family,
Extended Family and Friends

Internal use only





Peregrine Room and Travel Discount Program

What It Is:

A room and travel discount program available to all associates across the Peregrine Hospitality portfolio, including:

- Resort Properties
- Boutique Hotels
- Select Service Hotels
- Outrigger Properties
- Under Canvas

Why It Matters:

This program offers discount room rates and select ancillary discounts, encouraging associates to experience the exceptional hospitality we provide our guests—while enjoying time away.

Who Is Eligible

Discounted room and travel rates based on employment group and relationship to the associate.



Associate Rate

- KSLCP Associates
- Peregrine Corporate Associates
- Resort Associates
- Boutique Associates
- Select Service Associates
- Outrigger Associates

Immediate Family Rate

- Associate's Spouse/Domestic Partner
- Associate's Children
- Associate's Stepchildren
- Associate's Siblings
- Associate's Parents
- Associate's Stepparents

Extended Family/Friends Rate

- All others



Peregrine Room and Travel Discount Program Overview

- **Eligibility:** Associate must be actively employed and in good standing at the time of stay.
- **Booking Window:** Reservations must be made within 45 days of arrival. Max of 2 rooms and 7 nights per stay.
- **Room Type:** Discount applies to standard “Run of House” accommodations only.
- **Authorization Form:** A signed authorization form is required at check-in.
- **Cancellation:** Cancellations within 72 hours of arrival are subject to full room and tax charges.
- **Ancillary Discounts:** Eligible for discounts on F&B, spa, golf, etc., when charged to the room. Immediate and extended family/friends only receive discounts when accompanied by the associate.
- **Payment:** All charges must be paid in full at checkout.
- **No-Shows:** May result in loss of future program eligibility.
- **Availability:** If the discounted rate is not visible online, it is not available for booking at discounted rate.
- **Professional Conduct:** Associates and their guests must maintain professional behavior. Inappropriate conduct or discussion of hotel business in public areas may result in revoked privileges or immediate removal from property.
- **Liability:** Peregrine Hospitality and affiliates are not liable for workers’ compensation related to associate stays.

Rates and discounts summary

Location	Property	Associate Rate	Immediate Family Rate	Associate and Immediate Family Promo Code	Extended Family/Friends Rate	Extended Family/Friends Promo Code	Additional discounts available when immediate/extended family and friends accompanied by the associate and charged to room.
Pennsylvania	Camelback Resort	\$99/night double queen suite. Resort and self-parking fee waived.	\$99/night double queen suite. Resort and self-parking fee waived.	PRHGA	\$149/night. Resort fee and self-parking not waived	PHGAF	1. 20% off food (includes alcohol if ordered with meal only. Limited to parties of no more than 6. Larger parties must have prior department director-level approval). 2. 20% off on retail. 3. All ticketing is discounted for hotel guests - All bookable with a hotel room.
Pennsylvania	Blue Mountain Resort	See slides in this deck referencing discount and process for booking at Blue Mountain Resort					
California	Sheraton San Diego Resort	\$69/night. \$36 resort fee. Parking \$50/night for self-park and \$65 for valet.	\$69/night. \$36 resort fee. Parking \$50/night for self-park and \$65 for valet.	Z20	20% off best available rate and \$36 resort fee Parking is \$50/night for self-park and \$65 for valet.	FOC	20% off food (includes alcohol if ordered with meal only. Limited to parties of no more than 6. Larger parties must have prior department director-level approval).
California	Boutique Collection - Paso Robles Inn	\$99/night. Resort and parking fee waived.	\$99/night. Resort and parking fee waived.	PRHGA	25% discount off published room rate per night	PHGAF	20% off food only.
California	Boutique Collection - The Piccolo	\$149/night. Resort and parking fee waived.	\$149/night. Resort and parking fee waived.				
California	Boutique Collection - Avila Lighthouse Suites	\$139/night. Suite includes breakfast. Resort and parking fee waived.	\$139/night. Suite includes breakfast. Resort and parking fee waived.				
California	Boutique Collection - Pismo Lighthouse Suites	\$129/night. Suite includes breakfast. Resort and parking fee waived.	\$129/night. Suite includes breakfast. Resort and parking fee waived.				
California	Boutique Collection - Shore Cliff Hotel	\$99/night. Rate includes breakfast. Resort and parking fee waived.	\$99/night. Rate includes breakfast. Resort and parking fee waived.				
California	Boutique Collection - Vespera Resort on Pismo Beach	\$104/night. Resort fee is waived.	\$104/night. Resort fee is waived.	Z20	\$199/night and \$35 resort fee not waived.	FOC	1. 20% off food (includes alcohol if ordered with meal only. Limited to parties of no more than 6. Larger parties must have prior hotel department director-level approval). 2. 20% off on retail
California	Silverado Resort	See slides in this deck referencing the process for booking at Silverado					
US - Varies	Select Service Portfolio	See slides in this deck referencing the process for booking at Select Service					
Hawaii, Fiji, Maldives, Thailand, Mauritius	Outrigger Hospitality Group	See slides in this deck referencing the process for booking at Outrigger					
US - Varies	Under Canvas	See slides in this deck referencing the process for booking at Under Canvas					

Camelback Resort

P

193 Resort Drive
Tannersville, PA 18372
570-629-1665



Rates, discounts & procedures

Assocaite: Rate is \$99 per night for a Double Queen Suite; resort fee and self-parking charge is waived.

Immediate Family: Rate is \$99 per night for a Double Queen Suite; resort fee and self-parking charge is waived.

Extended Family/Friends: Rate is \$149 per night; resort fee and self-parking charge is not waived.

1. Access hotel website at www.camelbackresort.com
2. Click on Book Stay
3. Select Date, number of guests and enter code in Promo/Group Code
 - PRHGA for associate & immediate family
 - PRGAF for extended family and friends
4. Click Apply
5. Select Room type and click View Options
6. Select Build Stay and add amenities, passes, etc.
7. Click Go to Checkout, website will provide a summary of charges, Click Go To Checkout again
8. Enter information and credit card to hold room

Other Discounts

- 20% discount on food and beverage (includes alcohol with meal only, no bar. Limited to parties of no more than 6. Larger parties must have prior hotel department director-level approval)
- 20% discount on Retail
- All ticketing is discounted for hotel guests – Discounts range from 20% for some Mountain Adventures to 60% for lift tickets. All are bookable online with a hotel room

Blue Mountain Resort

P

1660 Blue Mountain Drive
Palmerton, PA 18071
610-826-7700



Rates, discounts & procedures

Associates, immediate and extended family and friends WHEN accompanied by the associate:

Other Discounts (no rooms onsite)

- Must be booked as walk in and in person at the point of purchase with Peregrine Reservation Authorization Form
- Complimentary Daily Rentals (Winter, based on availability)
- Complimentary First Time Lesson Package (Winter, based on availability, no weekends or holidays)
- 25% off Retail
- 10% F&B
- 20% off Mountain Bike Rentals
- 10% off Events (excludes Spartan Race)
- 15% off Date Night series events

Sheraton San Diego Hotel & Marina

P

1380 Harbor Boulevard
San Diego, CA 92101
619-219-2000



Rates, discounts & procedures

Associate: Rate is \$69 per night. Daily resort fee \$36. Parking is \$50/night for self-park and \$65 for valet and cannot be waived.

Immediate Family: Rate is \$69 per night. Daily resort fee \$36. Parking is \$50/night for self-park and \$65 for valet and cannot be waived.

Extended Family/Friends: Rate is 20% off best available rate per night. Resort and parking fee not waived.

1. Access hotel website at sheratonsandiegohotel.com
2. Enter desired booking dates, number of guests and select “Corporate/Promo/Set#” under Special rates
3. Enter code
 - Z20 for associate & immediate family
 - FOC for extended family and friends
4. Click View Rates
5. Guests can select their desired room type, click select
6. Website will provide a summary of charges, click continue
7. Guests can enter their information and credit card to hold room

Additional Discounts for Associates & Immediate Family when accompanied by the associate:

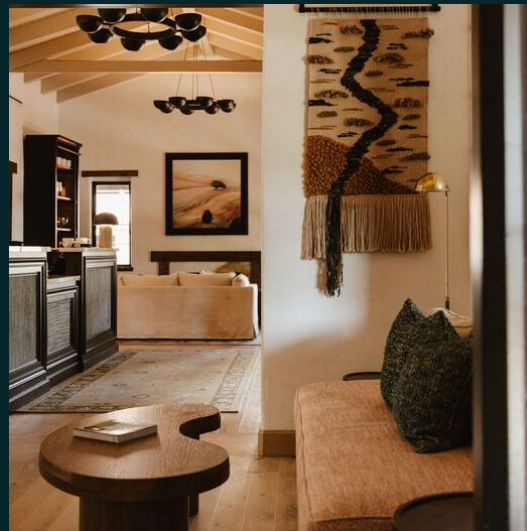
- 20% Discount on food (includes alcohol with meal only, no bar. Limited to parties of no more than 6 people. Larger parties must have prior hotel department director-level approval)

Boutique Collection

P

Stylist hotel that features distinctive design, exceptional service reflecting the local culture and community.

- Paso Robles Inn
- The Piccolo
- Avila Lighthouse Suites
- Pismo Lighthouse Suites
- Shore Cliff Hotel



Rates, discounts & procedures

1103 Spring Street, Paso Robles, CA 93446

Associate: \$99 per night for hotel rooms, waived resort fee & parking charge.

Immediate Family: \$99 per night for hotel rooms, waived resort fee & parking charge.

Extended Family/Friends: 25% discount off published hotel room rate per night.

1. Access hotel website at [Paso Robles Winery Hotels & Lodging | Paso Robles Inn](#)
2. Select Date, number of guests and enter code in Promo/Group Code
 - PRHGA for associate
 - PRHGA for immediate family
 - PHGAF for extended family and friends
3. Click Apply
4. Select Room type and click View Options
5. Website will provide a summary of charges, click continue
6. Guests can enter their information and credit card to hold room

Rates, discounts & procedures

600 12th Street, Paso Robles, CA 93446

Associate: \$149 per night for hotel rooms, waived resort fee & parking charge.

Immediate Family: \$149 per night for hotel rooms, waived resort fee & parking charge.

Extended Family/Friends: 25% discount off published hotel room rate per night plus tax.

1. Access hotel website at [Paso Robles Hotel Downtown | The Piccolo Hotel](#)
2. Select Date, number of guests and enter code in Promo/Group Code
 - PRHGA for associate
 - PRHGA for immediate family
 - PHGAF for extended family and friends
3. Click Apply
4. Select Room type and click View Options
5. Website will provide a summary of charges, click continue
6. Guests can enter their information and credit card to hold room

Rates, discounts & procedures

550 Front Street, Avila Beach, CA 93424

Associate: \$139 per night for suite. Includes breakfast, waived resort fee & parking charge.

Immediate Family: \$139 per night for suite. Includes breakfast, waived resort fee & parking charge.

Extended Family/Friends: 25% discount off published hotel room rate per night.

1. Access hotel website at [Avila Beach Hotel | Avila Lighthouse Suites](#)
2. Select Date, number of guests and enter code in Promo/Group Code
 - PRHGA for associate
 - PRHGA for immediate family
 - PHGAF for extended family and friends
3. Click Apply
4. Select Room type and click View Options
5. Website will provide a summary of charges, click continue
6. Guests can enter their information and credit card to hold room

Rates, discounts & procedures

2411 Price Street, Pismo Beach, CA 93449

Associate: \$129 per night for suite. Includes breakfast, waived resort fee & parking charge.

Immediate Family: \$129 per night for suite. Includes breakfast, waived resort fee & parking charge.

Extended Family/Friends: 25% discount off published hotel room rate per night.

1. Access hotel website at [Hotel in Pismo Beach California | Pismo Lighthouse Suites](#)
2. Select Date, number of guests and enter code in Promo/Group Code
 - PRHGA for associate
 - PRHGA for immediate family
 - PHGAF for extended family and friends
3. Click Apply
4. Select Room type and click View Options
5. Website will provide a summary of charges, click continue
6. Guests can enter their information and credit card to hold room

Rates, discounts & procedures

2555 Price Street, Pismo Beach, CA 93449

Associate: \$99 per night for suite. Includes breakfast, waived resort fee & parking charge.

Immediate Family: \$99 per night for suite. Includes breakfast, waived resort fee & parking charge.

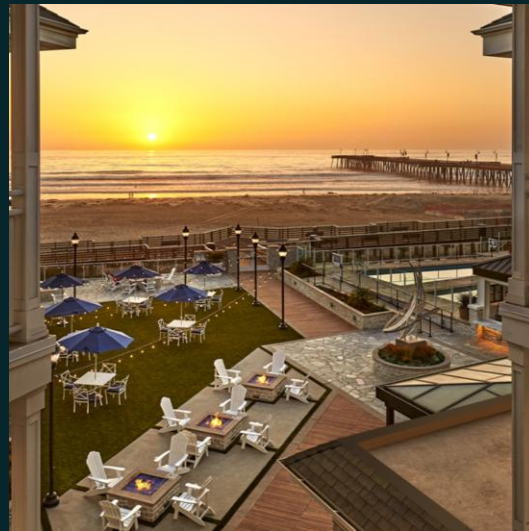
Extended Family/Friends: 25% discount off published hotel room rate per night plus tax.

1. Access hotel website at [Oceanfront Pismo Beach Hotel | Shore Cliff Hotel](#)
2. Select Date, number of guests and enter code in Promo/Group Code
 - PRHGA for associate
 - PRHGA for immediate family
 - PHGAF for extended family and friends
3. Click Apply
4. Select Room type and click View Options
5. Website will provide a summary of charges, click continue
6. Guests can enter their information and credit card to hold room

Vespera Resort on Pismo Beach

P

147 Stimson Avenue
Pismo Beach, CA 93449
805-773-1011



Rates, discounts & procedures

Associate: \$129 per night. Resort fee waive. Parking charge not waived.

Immediate Family: \$129 per night. Resort fee waive. Parking charge not waived.

Extended Family/Friends: Rate is \$199 per night and \$35 resort fee not waived. Parking charge not waived.

1. Access the hotel website at [Vespera Resort on Pismo Beach](#)
2. Click on the RESERVE button on the right of the page
3. Enter desired booking dates, number of guests and select “Corporate/Promo/Set#” under Special rates
4. Enter code
 - Z20 for associate & immediate family
 - FOC for extended family and friends
5. Click VIEW RATES
6. Guests can select their desired room type, click select
7. Website will provide a summary of charges, click continue
8. Guests can enter their information and credit card to hold room

Additional Discounts for Associates & Immediate Family when accompanied by the associate:

- 20% Discount on food & beverage (includes alcohol with meal only, no bar. Limited to parties of no more than 6 people. Larger parties must have prior hotel department director-level approval)
- 20% Discount on Retail. If person buys something on sale, they get the greater of the two discounts, not both.

Silverado Resort

P

600 Atlas Peak Road
Napa Valley, CA 94558
844-421-6474



Rates, discounts & procedures

Associate Rate :

- Code PRHGA Rate is \$99 per night during off season, resort and parking fee waived.
- Rate is \$149 per night hotel rooms in high season (July – October), resort fee waived.
- 50% discount off published rates for suites year-round for associates.

Immediate Family Rate:

- Code PRHGA Rate is \$99 per night during off season, resort fee not waived
- Rate is 50% discount off published hotel room rate during high season (July – October), resort fee not waived
- 50% discount off published rates for suites year-round

Extended Family/Friends:

- Code PHGAF Rate is \$149 per night during off season, resort fee not waived
- Rate is 50% discount off published hotel room rate during high season (July – October), resort fee not waived
- 50% discount off published rates for suites year-round

Please use the links below to access the Associate Discounted Rates for Silverado Resort

- Associate Rate Program: [Peregrine Associate Rate Program](#)
- Immediate Family and Extended Family and Friends: [Peregrine Friends and Family Rate Program](#)
 - Enter the number of guests, and desired dates and click Search
 - View rates and select their desired room type, click Book Now
 - Guests can enter their information and credit card to hold room

Rates, discounts & procedures

Additional 20% discounts for Associates, Immediate family, Extended Family/Friends when accompanied by the associate

- **Spa Treatment** - Tax and tip are based on full price
- **Food & Beverage** - Includes alcohol with meal only, no bar, limited to parties of no more than 6. Parties larger than this must have prior hotel department director level approval.
- **Retail, Pro Shop & Spa Retail** - If person buys something on sale, they get the greater of the two discounts, not both
- **Catering** – Includes alcohol with meal only, no bar. Based on space availability
- **Golf Discounts** - Based on space availability and must be resort overnight guest of the resort
 - \$49 per person for one foursome, per day, includes cart
 - 20% discount on club rental for immediate family/ 50% discount for associates
 - Golf instruction fees are not eligible for discount
- **Tennis** – Based on space availability
 - Free when staying on property
 - Tennis instruction fees are not eligible for discount
- **Fitness Center** – Free when staying on property

*No discounts are given on meeting room rental, A/V equipment, transportation, etc.

Select Service Portfolio

P

High quality, select service and extended stay hotels diversified by location, brand, and demand drivers.



The Oread Lawrence
Lawrence, KS

Associate and Immediate Family Rate

- Associate Rate: \$80 per night and applicable fees (resort and parking).
- Immediate Family Rate: \$80 per night and applicable fees (resort and parking).
- Extended Family and Friends Rate: Not available.

Associates should book the Peregrine rate using the brand.com booking site and designated company code:

	Associate Rate Code
Marriott	B2552
Hyatt	1018484
InterContinental Hotel Group (IHG):	787166589
Hilton-Hampton, Home2, Homewood	0003473010
Hilton-Hilton Garden Inn, Tapestry	3371241

Associate and Immediate Family Rate

Booking Links:

- [AC Hotel Clearwater Beach](#)
- [AC Hotel Durham](#)
- [Aloft Savannah Downtown Historic District](#)
- [Courtyard Clearwater Beach](#)
- [Courtyard Edison Woodbridge](#)
- Courtyard Hanover Lebanon - Coming Soon!
- Courtyard Lenox Berkshires - Coming Soon!
- [Element Atlanta Buckhead](#)
- [Fairfield Inn & Suites Boston Waltham](#)
- Fairfield Inn & Suites Cape Cod Hyannis - Coming Soon!
- [Fairfield Inn & Suites Savannah Downtown/Historic District](#)
- [Hampton Inn & Suites Berkshires-Lenox](#)
- [Hampton Inn & Suites Myrtle Beach/Oceanfront](#)
- [Hilton Garden Inn Temple Medical Center](#)
- [Holiday Inn Steamboat Springs](#)
- [Home2 Suites by Hilton Blacksburg](#)
- [Home2 Suites by Hilton Jacksonville Airport](#)

Booking Links:

- [Home2 Suites by Hilton Savannah Airport](#)
- [Homewood Suites by Hilton Cathedral City \(Palm Springs\)](#)
- [Hyatt House Portland / Beaverton](#)
- [Inn of Naples, Tapestry Collection by Hilton](#)
- [Killington Mountain Lodge, Tapestry Collection by Hilton](#)
- [Residence Inn Breckenridge](#)
- [Residence Inn Boston Waltham](#)
- Residence Inn Kingston - Coming Soon!
- Residence Inn Norfolk Airport - Coming Soon!
- [Residence Inn Tuscaloosa](#)
- [SpringHill Suites Atlanta Downton](#)
- [SpringHill Suites Navarre Beach](#)
- [SpringHill Suites Truckee](#)
- [The Oread Lawrence, Tapestry Collection by Hilton](#)
- [Tru by Hilton Galleria Ballpark](#)
- *La Quinta Inn by Wyndham Steamboat Springs - Not Available (Please book at Holiday Inn Steamboat Springs)*

Resort, Boutique and Select Service Reservation Authorization Form



Peregrine Hospitality Associate Reservation Authorization Form Required for Associate, Family and Friends Room and Travel Discount

PEREGRINE HOSPITALITY

Employee Information	
<input type="text"/>	<input type="text"/>
Employee Name	Employee Phone Number
<input type="text"/>	<input type="text"/>
Employee Hotel Property	Date of Hire
<input type="text"/>	<input type="text"/>

Reservation Information	
<input type="text"/>	<input type="text"/>
Hotel Name	Location (City, State)
<input type="text"/>	<input type="text"/>
Rate \$	Reservation Type (EE or F&F)
<input type="text"/>	<input type="text"/>
Check In Date	Check Out Date
<input type="text"/>	<input type="text"/>
Name on Reservation	Confirmation Number
<input type="text"/>	<input type="text"/>

To be completed by Human Resources or Executive Office:

Employee Information	
<input type="text"/>	<input type="text"/>
Print Name (Human Resources or Executive Office Authorization)	Email
<input type="text"/>	<input type="text"/>
Signature (Human Resources or Executive Office Authorization)	Date
<input type="text"/>	<input type="text"/>

The Peregrine Hospitality Associate Room and Travel Program provides discounted benefits at participating hotels to active associates, family members, and friends. Associate and "immediate family" are defined as the associate, their spouse, domestic partner, children, stepchildren, siblings, parents and stepparents. All others are considered "extended family and friends." This benefit is offered upon commencement of employment.

Associates are entitled to book a maximum of 2 rooms and up to 7 room nights based on availability.

If the reservation is canceled within 72 hours of the arrival date, the reservation will be subject to full room and tax.

Associates, family members and friends are expected to maintain our standards of conduct at all times while participating in this program at any of our hotels. Behavior considered to be inappropriate will result in the cancellation of your reservation, your departure from the hotel and permanent loss of hotel reservation privileges.

Guest MUST present a copy of the signed Associate Reservation Authorization Form at check-in. Discount rates will NOT be honored without signed Peregrine Hospitality Associate Reservation Authorization Form.

Outrigger Hospitality Group

P



Rates, discounts & procedures

EMPLOYEE & GUEST CONDUCT: Employees, their family members, and their friends are expected to always maintain the highest standards of conduct while participating in this program at any of our hotels. Employees are also responsible for the conduct of those who utilize these benefits. Employees, family members, and friends visiting OUTRIGGER properties will be treated in the same manner as regular hotel guests, receiving the same services and courtesies that would otherwise be granted. Likewise, the employee or family member should seek only those services and courtesies that would normally be extended to any guest and are not permitted into back-of-the-house areas.

PROGRAM ELIGIBILITY: Any employee who misrepresents the eligibility of an individual to obtain a discount, to which that individual is not otherwise entitled, is subject to discipline, up to and including termination of employment. This benefit is offered to all employees upon commencement of employment. Employees must be actively employed to participate in this benefit. The following restrictions apply:

- A maximum of 2 rooms and 7 days per stay is allowed at the qualifying rates.
- This benefit is offered on a space available basis at participating hotels.
- **Hosts, legal spouse/significant other, minor children/stepchildren of the host are not eligible to stay at the host's primary location.**
- Any and all damages to the physical room or hotel property are the responsibility of the registered guests.
- Minors are not allowed to check-in or stay in a hotel room without being accompanied by an adult.
- Hotel regulations related to maximum number of people allowed in the rooms should be adhered to.
- Should the individual(s) utilizing the discounted rooms benefit misuse the benefit, engage in illegal or inappropriate behavior, the employee to which the discounted rooms reservation is attached shall be subjected to suspension or termination of his/her discounted rooms benefit.

Rates, discounts & procedures

ROOM RATE ELIGIBILITY: The OUTRIGGER discounted room rate applies to employees of participating properties.

- Employee and Immediate Family – defined as the employee, spouse, children/stepchildren, siblings, and parents.
- All others are considered Extended Family & Friends.
- If EMEE and RELA rates are not available for your travel dates, the Daily Rate will be offered.

ROOM RESERVATIONS PROCEDURES: Reservations are to be made using the methods outlined below.

- Use the booking tool at <http://www.outrigger.com>. Enter promo code as follows:
- Employee & Immediate Family rate – EMEE
- Extended Family & Friend rate – RELA
- Bookings may be made no earlier than 45 days prior to the arrival date. A maximum of 2 rooms per booking are allowed at the EMEE or RELA rates.
- Complete the booking process on the website and print out a copy of our reservation confirmation.
- Complete the OUTRIGGER Employee Reservation Authorization Form (see slide 33) and obtain approval from your Human Resources department or Executive Office.
- At check-in, eligible employees, immediate family members, extended family members, and friends will need to present a signed OUTRIGGER Employee Reservation Authorization Form and hotel reservation confirmation.
- EMEE and RELA rates will NOT be honored without a signed OUTRIGGER Employee Reservation Authorization Form.

Rates, discounts & procedures

Additional Discounts for Associates & Immediate Family when accompanied by the associate:

- 20% discount on hotel owned or managed F&B (includes alcohol with meal, no bar, benefit limited to parties of 6 without prior authorization)
- 20% discount on hotel owned or managed Spa (tax and tip figured on full amount of charge)
- Fitness center is free on property
- 50% off parking and waived daily resort charge

Additional Discounts for Extended Family and Friends

- Fitness Center is free while on property
- 50% off parking and waived daily resort charge

Hotel	Name	Region	Type	Host Rate (Starting From)	Family & Friends Rate (Starting From)	Daily Resort Charge (parking not included)	HVC Departure Cleaning Charge (varies by room category)
ORF	OUTRIGGER Reef Waikiki Beach Resort	Waikiki	Resort	\$125++	-30% off Flexible Rate	Waived	N/A
DWK	OUTRIGGER Waikiki Beach Resort	Waikiki	Resort	\$125++	-30% off Flexible Rate	Waived	N/A
OBC	OUTRIGGER Waikiki Beachcomber Hotel	Waikiki	Hotel	\$125++	-30% off Flexible Rate	Waived	N/A
DEH	OUTRIGGER Waikiki Paradise Hotel	Waikiki	Hotel	\$99++	-30% off Flexible Rate	Waived	N/A
KBR	OUTRIGGER Kauai Beach Resort & Spa	Kauai	Resort	\$99++	-30% off Flexible Rate	Waived	N/A
OKB	OUTRIGGER Kaanapali Beach Resort	Maui	Resort	\$125++	-30% off Flexible Rate	Waived	N/A
OKR	OUTRIGGER Kona Resort & Spa	Kona	Resort	\$125++	-30% off Flexible Rate	Waived	N/A
ESH	Embassy Suites by Hilton™ - Waikiki Beach Walk*	Waikiki	Managed	\$229++	-30% off Flexible Rate	N/A	N/A
MAM	OUTRIGGER Maldives Maafushivaru Resort	APAC - Maldives	Resort	Up to 40% off Pre-pay and save rates From USD333++ Room+Breakfast & Dinner	Up to 20% off Pre-pay and save rates From USD444++ Room+Breakfast & Dinner	N/A	N/A
TPM	OUTRIGGER Surin Beach Resort	APAC - Thailand	Resort	Up to 40% off Pre-pay and save rates From THB1587++ Room+Breakfast	Up to 20% off Pre-pay and save rates From THB2116++ Room+Breakfast	N/A	N/A
TKL	OUTRIGGER Khao Lak Beach Resort	APAC - Thailand	Resort	Up to 40% off Pre-pay and save rates From THB1529++ Room+Breakfast	Up to 20% off Pre-pay and save rates From THB2039++ Room+Breakfast	N/A	N/A
TKS	OUTRIGGER Koh Samui Beach Resort	APAC - Thailand	Resort	Up to 40% off Pre-pay and save rates From THB1761++ Room+Breakfast	Up to 20% off Pre-pay and save rates From THB2308++ Room+Breakfast	N/A	N/A
FCI	Castaway Island, Fiji	APAC - Fiji	Resort	Up to 40% off Pre-pay and save rates From FJD540++ Room Only	Up to 20% off Pre-pay and save rates From FJD720++ Room Only	N/A	N/A
FOR	OUTRIGGER Fiji Beach Resort	APAC - Fiji	Resort	Up to 40% off Pre-pay and save rates From FJD201++ Room Only	Up to 20% off Pre-pay and save rates From FJD268++ Room Only	N/A	N/A
MOR	OUTRIGGER Mauritius Beach Resort	APAC - Mauritius	Resort	Up to 40% off Pre-pay and save rates From MRU4,260++ Room Only	Up to 20% off Pre-pay and save rates From MRU5680++ Room Only	N/A	N/A
FVR	Fairway Villas Waikoloa by OUTRIGGER*	Hawaii Island	Hawaii Vacation Condo by OUTRIGGER*	-50% off Flexible Rate + \$25 off Cleaning Charge, waived damage protection charge	-30% off Flexible Rate, waived damage protection charge	N/A	\$264++ - \$364++
KAK	Kanaloa at Kona by OUTRIGGER*	Hawaii Island	Hawaii Vacation Condo by OUTRIGGER*	-50% off Flexible Rate + \$25 off Cleaning Charge, waived damage protection charge	-30% off Flexible Rate, waived damage protection charge	\$30++**	\$264++ - \$339++
RSC	Royal Sea Cliff Kona by OUTRIGGER*	Hawaii Island	Hawaii Vacation Condo by OUTRIGGER*	-50% off Flexible Rate + \$25 off Cleaning Charge, waived damage protection charge	-30% off Flexible Rate, waived damage protection charge	N/A	\$214++ - \$314++
KPR	Kiahuna Plantation Resort Kauai by OUTRIGGER*	Kauai	Hawaii Vacation Condo by OUTRIGGER*	-50% off Flexible Rate + \$25 off Cleaning Charge, waived damage protection charge	-30% off Flexible Rate, waived damage protection charge	N/A	\$264++ - \$314++
UNR	Lae Nani Resort Kauai by OUTRIGGER*	Kauai	Hawaii Vacation Condo by OUTRIGGER*	-50% off Flexible Rate + \$25 off Cleaning Charge, waived damage protection charge	-30% off Flexible Rate, waived damage protection charge	N/A	\$264++ - \$314++
WBR	Waipouli Beach Resort & Spa Kauai by OUTRIGGER*	Kauai	Hawaii Vacation Condo by OUTRIGGER*	-50% off Flexible Rate + \$25 off Cleaning Charge, waived damage protection charge	-30% off Flexible Rate, waived damage protection charge	\$30+	\$229++ - \$339++
HKM	OUTRIGGER Honua Kai Resort & Spa	Maui	Hawaii Vacation Condo by OUTRIGGER*	-50% off Flexible Rate + \$25 off Cleaning Charge, waived damage protection charge	-30% off Flexible Rate, waived damage protection charge	\$40++	\$270++ - \$660++
KVL	The Kapalua Villas Maui	Maui	Hawaii Vacation Condo by OUTRIGGER*	-50% off Flexible Rate + \$25 off Cleaning Charge, waived damage protection charge	-30% off Flexible Rate, waived damage protection charge	\$39	\$289++ - \$364++
MER	Kā'anapali Maui at the Eldorado by OUTRIGGER*	Maui	Hawaii Vacation Condo by OUTRIGGER*	-50% off Flexible Rate + \$25 off Cleaning Charge, waived damage protection charge	-30% off Flexible Rate, waived damage protection charge	\$20*, \$65**	\$214++ - \$314++
NSR	Napili Shores Maui by OUTRIGGER*	Maui	Hawaii Vacation Condo by OUTRIGGER*	-50% off Flexible Rate + \$25 off Cleaning Charge, waived damage protection charge	-30% off Flexible Rate, waived damage protection charge	N/A	No Charges
PWR	Palms at Wailea Maui	Maui	Hawaii Vacation Condo by OUTRIGGER*	-50% off Flexible Rate + \$25 off Cleaning Charge, waived damage protection charge	-30% off Flexible Rate, waived damage protection charge	N/A	\$264++ - \$314++
RKR	Royal Kahana Maui by OUTRIGGER*	Maui	Hawaii Vacation Condo by OUTRIGGER*	-50% off Flexible Rate + \$25 off Cleaning Charge, waived damage protection charge	-30% off Flexible Rate, waived damage protection charge	N/A	\$214++ - \$314++
RBW	Regency on Beachwalk Waikiki by OUTRIGGER*	Waikiki	Hawaii Vacation Condo by OUTRIGGER*	-50% off Flexible Rate + \$25 off Cleaning Charge, waived damage protection charge	-30% off Flexible Rate, waived damage protection charge	N/A	\$289++ - \$339++
WSR	Waikiki Shore by OUTRIGGER*	Waikiki	Hawaii Vacation Condos by OUTRIGGER*	-50% off Flexible Rate + \$25 off Cleaning Charge, waived damage protection charge	-30% off Flexible Rate, waived damage protection charge	N/A	\$229++ - \$339++

* Taxes collected by association

** Service charge

Outrigger Reservation Authorization Form

Host Reservation Authorization Form

OUTRIGGER

PEREGRINE HOSPITALITY

To be completed by host

HOST INFORMATION		
Host Name	EE#	
Property	Date of hire	
Email Contact	Phone Number	

RESERVATION INFORMATION		
Property		
Confirmation Number	Rate \$	Number of rooms (Max 2 rooms per booking)
Check-in Date	Check-out date	Number of room nights (Max 7 nights per booking)
Name: Immediate family member	Relationship to host (legal spouse/significant other, children/step-children, parents, siblings)	
Name: Immediate family member	Relationship to host (legal spouse/significant other, children/step-children, parents, siblings)	
Name: Immediate family member	Relationship to host (legal spouse/significant other, children/step-children, parents, siblings)	
Name: Extended family & friends	Relationship to host (grandparents, in-laws, aunts/uncles, cousins, friends)	
Name: Extended family & friends	Relationship to host (grandparents, in-laws, aunts/uncles, cousins, friends)	
Name: Extended family & friends	Relationship to host (grandparents, in-laws, aunts/uncles, cousins, friends)	

To be completed by Human Resources / Executive Office

PRINT NAME	Human Resources / Executive Office authorization	Phone number
SIGNATURE	Human Resources / Executive Office authorization	Date

The OUTRIGGER Host Rooms Discount Program provides discounted rooms at participating hotels to eligible hosts, family members, and friends. This benefit is available to all hosts after completion of the Host's introductory period. Hosts must be actively employed at the time of booking and stay to participate. Based on availability, hosts are eligible to book a maximum of 2 rooms per booking, up to 7 discounted room nights per room. Multiple bookings at various properties over the same dates are not allowed.

Host Discounted Room Rates (EMEE) are available to eligible Hosts and immediate family members (legal spouse/significant other, children/step-children of the host, parents and siblings). Hosts, legal spouse/significant other, children/step-children of the host are not eligible to stay at the Host's Primary location.

Discounted room rates (RELA) for Extended Family and Friends are also available. Extended family and friends (grandparents, in-laws, aunts/uncles, cousins, friends) are also eligible for discounted room rates. Hosts and eligible family members and friends are expected to maintain our standards of conduct at all times while participating in this program.

Only Hosts are eligible to make reservations under the Policy for themselves, immediate family and/or extended family and friends – i.e., immediate family and/or extended family and friends are not eligible to make reservations on their own. Doing so is a violation of this Policy and is grounds for suspension and/or termination of this benefit for the Host.

Use the booking tool at outrigger.com/employeesites. Enter promo code as follows:

1. Host & Immediate Family rate – EMEE
 2. Extended Family & Friend rate – RELA
- Bookings may be made no earlier than 45 days prior to arrival date.
 - Host MUST present a copy of the signed Host Reservation Authorization Form at check-in.
 - Unaccompanied immediate/extended family members and friends MUST present at check-in, a photo ID, a copy of the reservation confirmation, and a copy of the signed Host Reservation Authorization Form.
 - EMEE and RELA rates will NOT be honored without a signed OUTRIGGER Host Reservation Authorization Form.
 - If eligible Participants are unable to use the room(s) stays booked under this Policy, the Host is responsible for canceling the reservation. Cancellation fees will apply.

Under Canvas

P

Unique on-site programming,
adventures, and culinary experiences



25% off for the 2025 Season
At All Under Canvas Locations and ULUM Moab

Associates of Peregrine are eligible for 25% off room rates at any Under Canvas location or ULUM Moab. Can book up to two tents per stay. Associate must be present.

- To Book: call (888) 496-1148 or email (using KSL Capital portfolio work email address): reservations@undercanvas.com
- To Learn More: www.undercanvas.com or www.ulumresorts.com

*No reservation authorization form needed.



Please contact
your HR team
with any
questions

P

